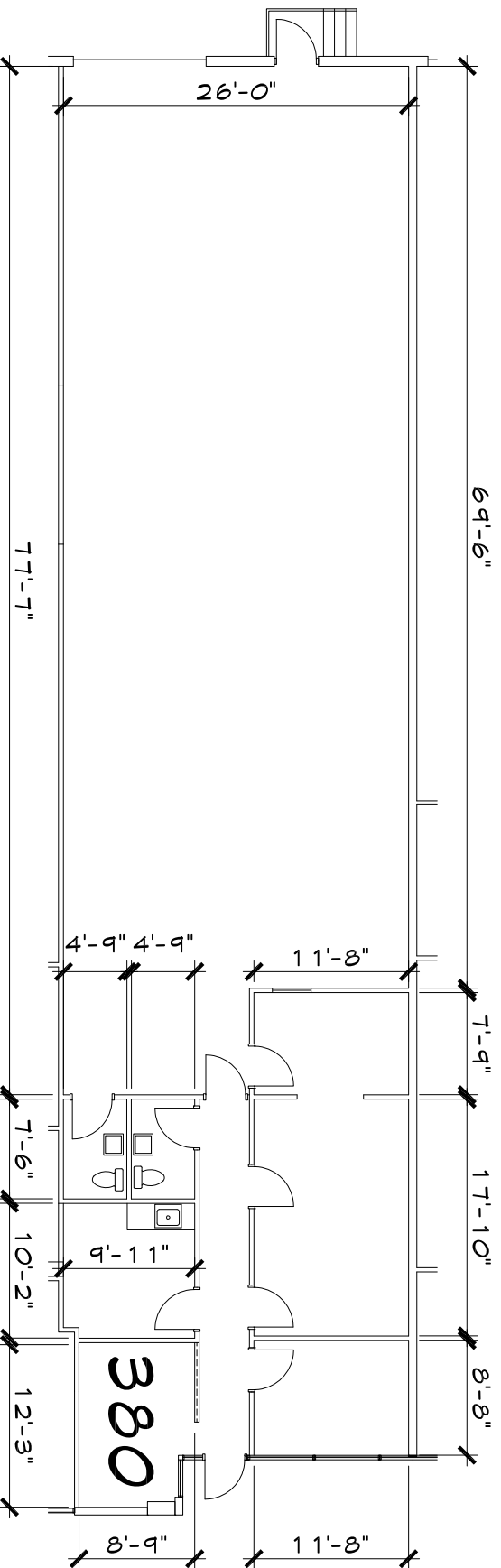




**Kinslow, Keith & Todd, Inc.**  
 architecture | interiors | engineering  
 tel 918.744.4270  
 fax 918.744.7849  
 2200 south ulfca place, suite 200  
 tulsa, oklahoma 74114  
 www.kktarchitects.com



**3168 SOUTH  
 108TH EAST  
 AVENUE  
 STES. 380**  
 BUILDING III  
 FREEPORT  
 TRADE CENTER  
 CASE  
 & ASSOCIATES

# A FLOOR PLAN

SCALE: N.T.S.



SUITE 380  
 VACANT  
 OFFICE - 91706 USF  
 WAREHOUSE - 1,983,66 USF  
 TOTAL - 2,90072 USF

SCALE	N.T.S.
FILE NAME	TC38FPAS
MANAGER	ELS
DRAWN BY	ELS
01.16.14	

AS-BUILT  
 PLAN  
**AS.1**